

Thursday October 27, 2022

9:15 am – 4:30 pm

PA Convention Center – Room 120

Enter at NW Corner 13th & Arch Sts.

Registration and Continental Breakfast
begin at 8:15 am

- *Network with your colleagues*
- *Seminar Intended for ALL Levels of Experience*
- *Get Current on the most Recent Cases*

Limited Seating: Because of COVID restraints, in-person seating will be limited to the first 200 registrants. Once that limit is reached, all future registrants will be limited to On-Line Presentation only. Those who qualify for in-person seating will receive a special admission form. Those not qualifying for the Live Presentation will be automatically registered for the On-Line presentation and placed on the wait list.

COVID Policy: ALL registrants requesting in-person seating represent by registering that they are fully vaccinated.

MASK Policy: At the option of each registrant.

C.L.E. Credits: The Dispute Resolution Institute, is an accredited CLE provider. This program has been approved by the Pennsylvania Continuing Legal Education Board for 5 hours of substantive law and 1 hour of ethics CLE credit. If you attend the entire program, you will receive 5 credits in substantive law and 1 credit in ethics. If you attend only a portion of the program, you will receive all substantive law credits for the time attended and NO ethics law credits. The foregoing is in accordance with the Pennsylvania Continuing Legal Education Board's rules and regulations.

Cancellation Policy: If you are unable to attend the course, you may send a substitute or you will receive the course materials in full consideration of tuition paid.

Enrollment

\$225 for 6 Credits
5 Substantive 1 Ethics

Preferred Registration Method
ON-LINE
www.adrdri.com



MAIL

The Dispute Resolution
Institute
660 Two Logan Square
Philadelphia, PA 19103



FAX

215-656-4089



PHONE

215-656-4374

Questions?

Call or E-mail Margie Pepe: 215-656-4374 margie@adrdri.com

Name _____





Atty.# _____

e-mail _____

Address _____

City _____ State _____ Zip _____

A check payable to DRI, Inc. for \$ _____
is enclosed.

Charge my     (Circle One)

Exp. _____

Card # _____

Security Code _____

Signature _____

Dispute Resolution Institute Scholarships:

DRI provides full scholarships for all of our accredited seminars. DRI scholarships are available on a confidential basis to attorneys with limited financial means to assist them in meeting their current Pennsylvania CLE requirement. A letter detailing the basis of the requested tuition waiver should be forwarded no later than October 1, 2022 to:

Michael Galbraith, Esq.
Deputy Director,
The Dispute Resolution
Institute



ARBITRATION / MEDIATION
DISCOVERY-SPECIAL MASTER
EXPERT ANALYSIS & REPORTS
POST TRIAL &
APPELLATE ADVISING



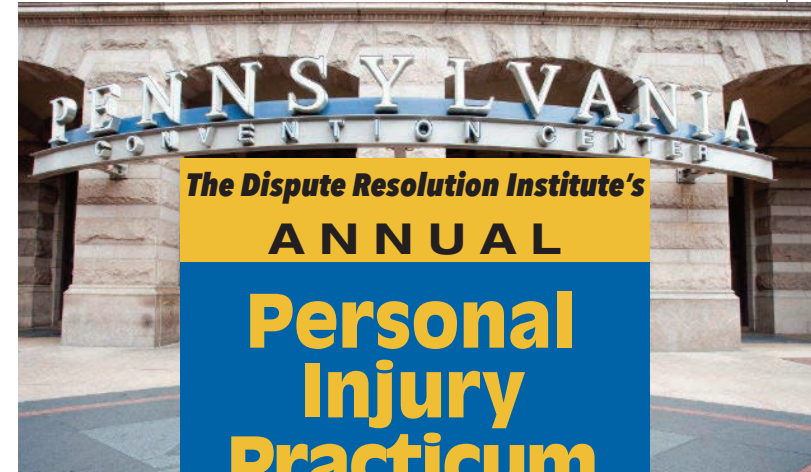
215-656-4374 • FAX: 215-656-4089
www.adrdri.com

2022 Personal Injury Practicum Sponsored by:



Forensic Consulting, Technology & Animations
**Unparalleled experience,
period.**

OCT. 27, 2022 - Register Now! www.adrdri.com



The Dispute Resolution Institute's
ANNUAL

**Personal
Injury
Practicum**

We're Back!

Soft Pretzels, Tastykakes and a

LIVE PRESENTATION

and On-Line Streaming from the

**Pennsylvania
Convention Center**

Thursday October 27, 2022

9:15 am to 4:30 pm

**Limited Live Seating
Register Early**

6 CREDITS

5 Substantive

1 Ethics

\$225



Harris T. Bock, Esq.
Director



The Dispute
Resolution Institute
SINCE 1994

ARBITRATION / MEDIATION / DISCOVERY – SPECIAL MASTER
POST TRIAL AND APPELLATE ADVISING

www.adrdri.com



Why Attend?

- 1** Benefit from the numerous bread and butter suggestions always offered at this seminar.
- 2** Become current and conversant with the newest cases that are important for you to know and are critical to your practice.
- 3** Be inspired by a truly memorable and unique Keynote Address.
- 4** Recognizing and learning how to avoid common mistakes made by lawyers.
- 5** Civic Program UPDATE from Judge Anders and his awesome crew.
- 6** Earn one-half of your yearly substantive and ethics CLE requirements at the seminar that everyone raves about as educational and enjoyable.
- 7** Learn how you can hit the lottery with a N.J. bad faith case
- 8** Learn about the intersection of "WEED" and P.I.
- 9** Learn how you can handle a straightforward sexual abuse case.
- 10** Be part of our first LIVE PROGRAM since Covid and get to socialize with 200 colleagues

The specially priced tuition of \$225 for this unique and unusual course, along with six CLE credits, soft pretzels and tastykakes makes this program the best attended and best value in Pennsylvania Continuing Legal Education for P.I. Lawyers.

LIMITED SEATING FOR LIVE PRESENTATION

Enroll now at:
www.adrdri.com



Respected and Well Known Faculty



Harris T. Bock, Esq.
The Dispute Resolution Institute
Director / Course Planner



Judge Richard B. Klein (Ret.)
The Dispute Resolution Institute



Hon. Sandra Mazer Moss (Ret.)
The Dispute Resolution Institute



Judge A. Michael Snyder (Ret.)
The Dispute Resolution Institute



Prof. Samuel D. Hodge, Esq.
The Dispute Resolution Institute



Michael L. Galbraith, Esq.
The Dispute Resolution Institute
Deputy Director



Judge Daniel J. Anders
Supervising Judge
Philadelphia Court of Common Pleas
Civil Division



Peter Divon, Manager
The Dispute Resolution Center



Maureen Eagen, Esq.
The Arbitration Center



Theresa M. Italiano, Esq.
First Judicial District of PA

Keynote Speaker



Larry Bendesky, Esq.
Saltz, Mongeluzzi, & Bendesky, PC



Marni S. Berger, Esq.
Saltz, Mongeluzzi, & Bendesky, PC



Jacqueline M. Carolan, Esq.
Fox Rothschild LLP



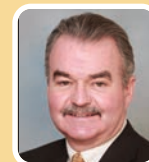
Christopher J. Culleton, Esq.
Swartz Culleton, P.C.



Jennifer Coatsworth
Margolis Edelstein



Judge Abraham J. Gafni, Esq. (Ret.)
Villanova University



James C. Haggerty, Esq.
Haggerty, Goldberg, Schleifer
& Kupersmith, P.C.



Denise M. Mandi, Esq.
Law Office of Dennis O. Wilson



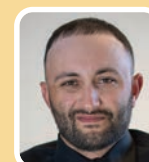
Dino Privitera, Esq.
The Privitera Law Firm LLC



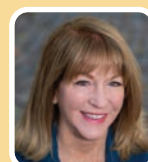
William J. Ricci, Esq.
Ricci Tyrell Johnson & Grey



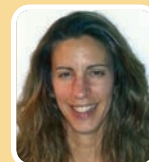
Steven M. Schain, Esq.
Smart-Counsel LLC



Justin P. Schorr, Ph.D.
DJS Associates, Inc.



Madeline Sherry



Capri R. Stevens, Esq.
Law Offices of Kenneth S. O'Neill
Allstate Insurance Company



Scott J. Tredwell, Esq.
McCormick & Priore, P.C.

The Program

Morning Session - 9:15 am - 12:30 pm

- New case law update and analysis
- Common Pleas comprehensive presentation
- Recognize the importance of attorney wellness
- Old dogs teach old tricks for P.I. cases
- Current insight regarding nursing home litigation
- *Hit the Lottery*- The recently enacted New Jersey bad faith law

LUNCH - (On your Own)

Afternoon Session - 1:15 pm - 4:30 pm

- A sexual abuse case practicum
- Forensic technology update
- Pro Bono cameo
- Professionalism pays dividends
- "Weed" and P.I. cases
- AWESOME Professor Hodge with a forensic medical presentation

and Much, Much More!



Presented in a 1st Class Facility
In an Upbeat 1st Class Style
By 1st Class Presenters
and soft pretzels and tastykakes